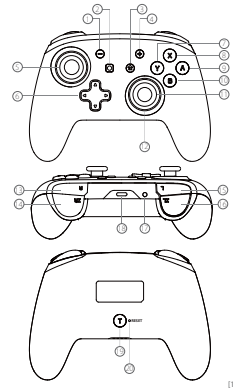


Welcome Guide

Wireless controller

YS32

Button layout



1. - button
2. Home button
3. Left stick
4. D-pad
5. Right stick
6. X button
7. Y button
8. B button
9. A button
10. Light ring
11. Right pad
12. Left pad
13. R button
14. L button
15. L2 button
16. R2 button
17. Pairing button
18. Type-C charging interface
19. Turbo button

Specifications

1. Size: 4.30*5.94*2.4in
2. Weight: 6.2/6.5/0.35oz
3. Material: New ABS environmentally friendly material
4. Transmission medium: Bluetooth 2.1
5. Vibration: Dual motor, powerful vibration mode
6. Carrier frequency: 2.402-2.480GHz
7. Battery: 1 polymer lithium battery, 3.7V/600mAh
8. Battery life: Work continuously for 8 hours after full charge
9. Operating voltage: 3.7V-4.2V
10. Charging voltage: 5V
11. Built-in six-axis gyroscope and acceleration function for better game experience
12. Support continuous burst and burst clearance function

Driver Package

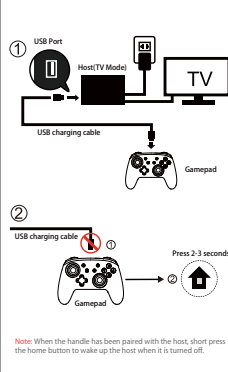
We support downloading the driver package through a USB connection to the computer to fix some problems that may be encountered in use. If the driver package does not work, please contact us by email (support@binbok.com).

Driver package download website: www.binbok.com

Note: No need to download driver if it can be used normally, otherwise new problems may occur due to version conflicts.

First Use:

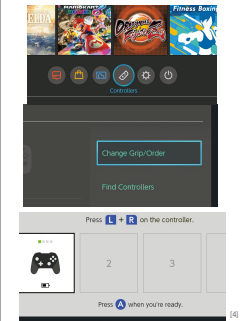
1. USB Pairing



Note: When the handle has been paired with the host, short press the home button to wake up the host when it is turned off.

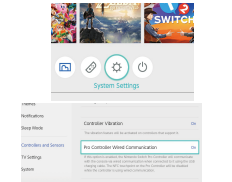
2. Wireless Pairing

Please ensure that the host is powered on and has been upgraded to the latest version before using this product.

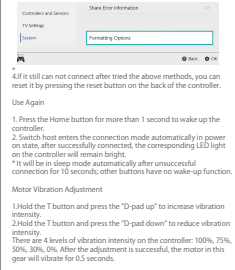
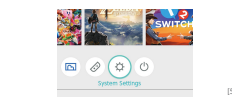


3. Connection Problem

1. If the controller can not connect with Switch Console, please resolve with the following methods:
1. Fully charged via USB cable if power low then attempt to connect.
2. Try to connect with Switch Console via USB cable. As pictures shown (Setting - Controllers and Sensors - Pro Controller Wired Communication), only works when enable Pro Controller Wired Communication Mode.



3. Clear the Switch Console connection cache if 1&2 methods can not work out, as pictures shown (Setting - System - Formatting Options - Rese Cache). Too much Bluetooth data may cause connection error. In order to avoid this situation, clearing the Bluetooth data before connected is necessary.



4. If it still can not connect after tried the above methods, you can reset it by pressing the reset button on the back of the controller. Use Again
1. Press the Home button for more than 1 second to wake up the controller.
2. Switch host enters the connection mode automatically in power on state, after successfully connected, the corresponding LED light on the controller will remain bright.
- "It will be in sleep mode automatically after unsuccessful connection for 10 seconds; other buttons have no wake-up function."

- #### Motor Vibration Adjustment
1. Hold the T button and press the "D-pad up" to increase vibration intensity.
 2. Hold the T button and press the "D-pad down" to reduce vibration intensity.
- There are 4 levels of vibration intensity on the controller: 100%, 75%, 50%, 30%, 0%. After the adjustment is successful, the motor in this gear will vibrate for 0.5 seconds.
- #### Turbo Function
1. Hold the T button and press any of A/B/X/Y/L/R/ZL/ZR button (for the first time) to turn on the normal Turbo function.
 2. Hold the Turbo button and press any of A/B/X/Y/L/R/ZL/ZR button (for the second time) to turn on the automatic Turbo function.
 3. Hold the T button and press (for the first time) A/B/X/Y/L/R/ZL/ZR button to turn off the automatic Turbo function.
 4. "Hold the Turbo button for 1 seconds to cancel the Turbo function. Note: The controller will vibrate when you turn on or turn off the Turbo functions."

TURBO Speed Adjustment Method

1. Hold the T button and press the - button to decrease the turbo speed.
 2. Hold the T button and press the + button to increase turbo speed.
- During the burst, the LED light flashes at the corresponding speed.
- *There are three gears:
- A. 3shots/s
 - B. 1shots/s
 - C. 2shots/s

LED Ring Setting

Note: After the first time using the controller, it will keep the last light setting by default.

- 1-7 colors: 1.Red 2.Orange 3.Green 4.Cyan 5.Blue 6.Purple 7.Rainbow

Normal Mode

Hold the T button and press the joystick once to turn the light into normal mode (the light will keep on this color), and repeat this procedure to change color. (Controller will vibrate when set successfully)

Brightness adjustment: Press & hold the T button and joystick to change the brightness, then release the joystick to fix the brightness. (Controller will vibrate when set successfully)

Breathing Light Mode

Hold the T button and press the joystick twice to turn the light into breathing light mode, the following three modes will be cycled. (Controller will vibrate when set successfully)

Mode 1: 1-4 color auto cycling.
Mode 2: Rainbow light.
Mode 3: Light off.

Reset Button Function

When there are some unsolvable faults in the controller, you can try to press and hold the reset button on the back of the controller for more than 5 seconds. At this time, the controller is powered off and reset, and you need to reconnect according to the method of connecting the controller for the first time.



5. Press the X button to adjust the interface, and continue the next step according to the host indication.

Charging Indication

1. Battery low voltage alarm system: current indicator flashes (quickly flashing).
2. The current channel indicator flashes (slow flash) when charging, and the current indicator is always on when fully charged.
3. When the pairing indicator conflicts with the charging low power indicator, the pairing indicator takes a concern.

Sleep Mode

1. The controller automatically sleeps when the host screen is off.
2. The controller automatically sleeps without pressing any button in 5 minutes (sensor does not move).
3. In Bluetooth mode, press the Home button for 5 seconds or press the Pairing button for 1 second, the controller will disconnect from the host and sleep.

Warning

1. Do not expose the controller to high temperature, high humidity or direct sunshine.
2. Do not allow liquid or small particles to enter the controller.
3. Do not put any heavy object on the controller.
4. Do not disassemble the controller.
5. Do not twist or pull the cable too strongly.
6. Do not throw, drop, or apply strong shock to the controller.

Binbok Game

@BINBOKOR/ial

Official Homepage: binbok.com
(Register on this web to activate aftersales.)

US: support@binbok.com
EU: support.eu@binbok.com

Business Contact: contact@binbok.com

About Us

BINBOK

Beats. It. Game!

This device complies with part 15 of the FCC Rules. Operation is subject to the following two conditions: (1) this device may not cause harmful interference, and (2) this device must accept any interference received, including interference that may cause undesired operation.

Any changes or modifications not expressly approved by the party responsible for compliance could void the user's authority to operate the equipment.

NOTE: This equipment has been tested and found to comply with the limits for a Class B digital device, pursuant to Part 15 of the FCC Rules. These limits are designed to provide reasonable protection against harmful interference in a residential installation. This equipment generates, uses and can radiate radio frequency energy and, if not installed and used in accordance with the instructions, may cause harmful interference to radio communications. However, there is no guarantee that interference will not occur in a particular installation.

If this equipment does cause harmful interference to radio or television reception, which can be determined by turning the equipment off and on, the user is encouraged to try to correct the interference by one or more of the following measures:

- Reorient or relocate the receiving antenna.
- Increase the separation between the equipment and receiver.
- Connect the equipment into an outlet on a circuit different from that to which the receiver is connected.
- Consult the dealer or an experienced radio/TV technician for help.

The device has been evaluated to meet general RF exposure requirement. The device can be used in portable exposure condition without restriction